

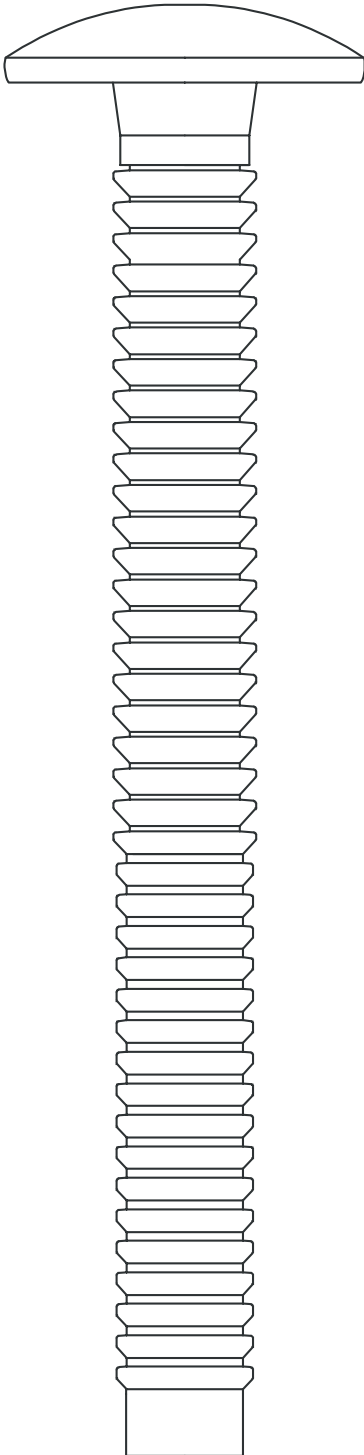
G-G RIPTM
Full T304 Stainless Steel Lockbolt System





G-GRIP™

Full T304 Stainless Steel Lockbolt System



In applications where a wide grip range is needed and a consistent flush pin break to the collar is favorable, the Goebel G-Grip™ is the new and improved standard in the market. Essentially the G-Grip™ extensive grip range and various sizes can replace up to 14 sizes of the classic 6-groove locking fastener system.

Similar to all Goebel engineered fasteners, the G-Grip™ provides a top level of quality and vibration resistance. The G-Grip™ installs consistently with reliable and identical installed values.

Available Sizes: 3/16", 1/4"

Materials: T304 Stainless Steel

Headstyles: Rivet Head, Truss Head, Button Head, 90° Flush Head

Advantages

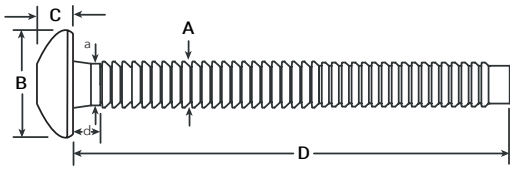
- Multi-Grip Design
- High Corrosion Resistance
- Vibration Resistance
- Flush Breaking Pin
- Efficient Installation Process
- Reduced Inventory Needed of Standard Parts

PATENT PENDING

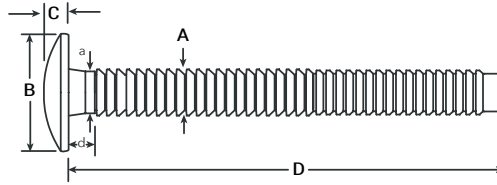


DATE AND DIMENSION

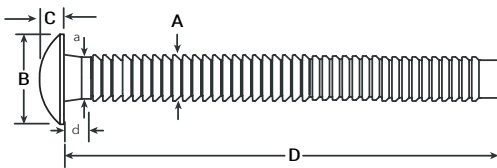
HEAD STYLE OPTIONS



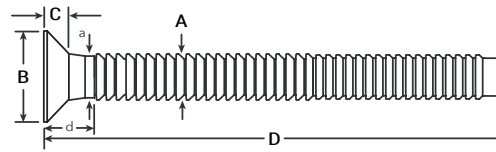
BUTTON HEAD GGBH



TRUSS HEAD GGTH



RIVET HEAD GGRH

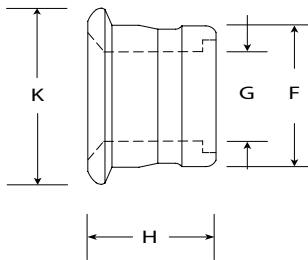


90° FLUSH HEAD GGFH

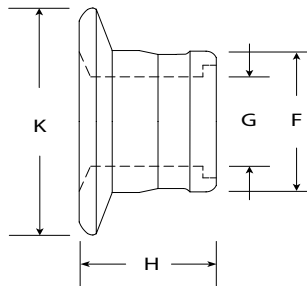
Diameter	Grip Number	Grip Range	Hole Size Max	A MAX	B	C	D	a MAX	d REF
Button Head Dimensions									
6 (3/16")	10	.062-.625	.219	.189	.360-.390	.111-.127	1.771-1.831	.192	.087
	20	.312-1.250	.219	.189	.360-.390	.111-.127	2.353-2.413	.192	.312
8 (1/4")	10	.125-.625	.281	.250	.480-.520	.135-.155	1.965-2.040	.259	.125
	20	.312-1.250	.281	.250	.480-.520	.135-.155	2.560-2.635	.259	.312
Truss Head Dimensions									
8 (1/4")	10	.125-.625	.281	.250	.530-.595	.115-.135	1.965-2.040	.259	.125
	20	.312-1.250	.281	.250	.530-.595	.115-.135	2.560-2.635	.259	.312
Rivet Head Dimensions									
6 (3/16")	10	.062-.625	.219	.189	.467-.488	.098-.110	1.771-1.831	.192	.087
	10	.312-1.250	.219	.189	.467-.488	.098-.110	2.353-2.413	.192	.312
90° Flush Head Dimensions									
6 (3/16")	10	.062-.625	.219	.189	.325-.360	.075-.090	1.771-1.831	.192	-
	20	.312-1.250	.219	.189	.325-.360	.075-.090	2.353-2.413	.192	.312
8 (1/4")	10	.125-.625	.281	.250	.435-.475	.115-.130	1.965-2.040	.259	-
	20	.312-1.250	.281	.250	.435-.475	.115-.130	2.560-2.635	.259	.312



DATE AND DIMENSION
COLLAR STYLE OPTIONS



STANDARD FLANGE GGCS



MEDIUM FLANGE GGCM

COLLAR DIMENSIONS

COLLAR	DIAMETER	F	G	H	K
GGCS	3/16"	.305-.315	.190-.204	.270-.291	.375-.407
	1/4"	.395-.405	.238-.260	.421-.437	.505-.528
GGCM	3/16"	.305-.315	.190-.204	.295-.315	.495-.535
	1/4"	.395-.405	.238-.260	.488-.514	.665-.715

INSTALLED VALUES IN NOMINAL GRIP (lbs.)

DIAMETER		ALUMINUM		STEEL / STAINLESS STEEL	
		MIN. (lbf.)	TYPICAL (lbf.)	MIN. (lbf.)	TYPICAL (lbf.)
3/16"	Shear	750	1000	1725	2000
	Tensile	900	1300	1650	2700
	Clamp	550	800	1025	1500
1/4"	Shear	1200	1600	2200	2700
	Tensile	1620	2500	2950	4000
	Clamp	950	1400	1350	2000



ORDERING INFORMATION

PINS

The table below shows how the item code is created. Please use those charts for ordering.

Example: GGBH-J8-10 is a G-Grip™ fastener, Button Head, Stainless Steel (316), 1/4" Diameter, Grip Range 10

HEAD STYLE	PREFIX	MATERIAL	CODE	DIA.	CODE	GRIP RANGE	CODE	FINISH	CODE
BUTTON HEAD	BH	STEEL	S	3/16"	6	.062-0.625	10	ZINC PLATED	Z
TRUSS HEAD	TH	STAINLESS STEEL 304	I	1/4"	8	.312-.1.250	20	CLEAR CHRO-MATE	C
BROAD TRUSS HEAD	BTH	STAINLESS STEEL 316	J					PASSIVATED	P
RIVET HEAD	RH								
90° FLUSH HEAD	FH								

ORDERING INFORMATION

COLLARS

The table below shows how the item code is created. Please use those charts for ordering.

Example: GGCW-J8 is a wide Flange G-Grip™ Collar, Stainless Steel (316), 1/4"

FLANGE STYLE	CODE	MATERIAL	CODE	DIA.	CODE	FINISH	CODE
G-Grip Collar Standard	GGCS	ALUMINUM	A	3/16"	6	ZINC PLATED	Z
G-Grip Collar Medium	GGCM	STEEL	S	1/4"	8	CLEAR CHROMATE	C
		STAINLESS STEEL 304	I			PASSIVATED	P
		STAINLESS STEEL 316	J				



TOOLING

WEIGHT AND DIMENSIONS



GO-12-P



GO-LB1

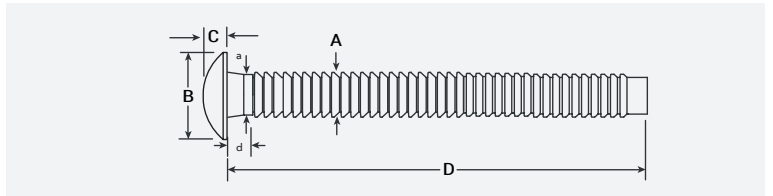
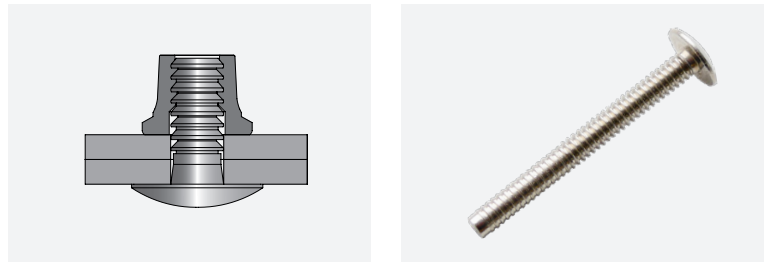


GO-400

MODEL	TYPE	CAPACITY	WEIGHT	LENGTH	HEIGHT	ITEM CODE
GO-12-P	Hand Ratchet Tool	3/16" up to 1/4"	2.43 lbs	7.32"	8.15"	22450 00300
GO-LB1	Cordless Tool	3/16" up to 1/4"	3.30 lbs	9.60"	10.23"	22770 40010
GO-400	Cordless Tool	3/16" up to 1/4"	3.70 lbs	11.42"	11.22"	22660 40102



LOCKBOLTS - G-GRIP™
RIVET HEAD



Body: **AISI 304 STAINLESS STEEL**
Finish: **POLISHED & PASSIVATED**

DESCRIPTION ITEM-CODE	BODY LENGTH D		GRIP NUMBER	GRIP RANGE		d REF	
	in	mm		in	mm	in	mm
6 3/16" (4.8 mm)							
GGRH-I6-10P	1.771 - 1.831	44.983 - 46.507	10	.0625 - .625	1.588 - 15.875	.087	2.210
GGRH-I6-20P	2.353 - 2.413	59.766 - 61.290	20	.312 - 1.250	7.925 - 31.750	.312	7.925

6 3/16" (4.8 mm)
B = .467-.488" 11.862-12.395 mm
C = .098-.110" 2.489-2.794 mm
A MAX = .189" 4.800 mm
a MAX = .192" 4.887 mm
Hole Size MAX = .219" 5.563 mm

8 1/4" (6.4 mm)							
GGRH-I8-10P	1.771 - 1.831	44.983 - 46.507	10	.125 - .625	1.588 - 15.875	.125	3.175
GGRH-I8-20P	2.353 - 2.413	59.766 - 61.290	20	.312 - 1.250	7.925 - 31.750	.311	7.925

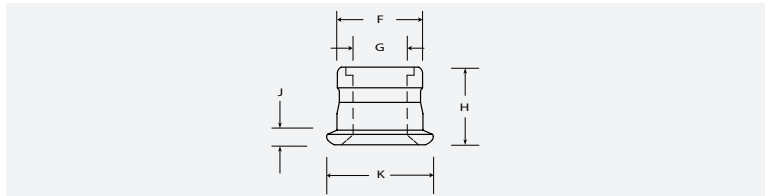
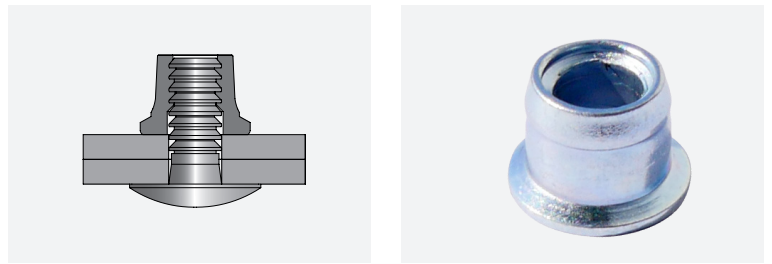
8 1/4" (6.4 mm)
B = .480-.520" 12.192-13.208 mm
C = .134-.154" 3.404-3.911 mm
A MAX = .250" 6.350 mm
a MAX = .259" 6.577 mm
Hole Size MAX = .281" 7.134 mm

INSTALLED VALUES IN NOMINAL GRIP FOR STAINLESS STEEL

DIAMETER	SHEAR		TENSILE		CLAMP	
	MIN. (lbf.)	TYPICAL (lbf.)	MIN. (lbf.)	TYPICAL (lbf.)	MIN. (lbf.)	TYPICAL (lbf.)
	MIN. (kn)	TYPICAL (kn)	MIN. (kn)	TYPICAL (kn)	MIN. (kn)	TYPICAL (kn)
6 3/16" (4.8 mm)						
3/16"	1725	2000	1650	2700	1025	1500
4.8 mm	7.67	8.90	7.34	12.01	4.56	6.67
8 1/4" (6.4 mm)						
1/4"	2200	2700	2950	4000	1350	2000
6.4 mm	9.79	12.01	13.12	17.79	6.00	8.90



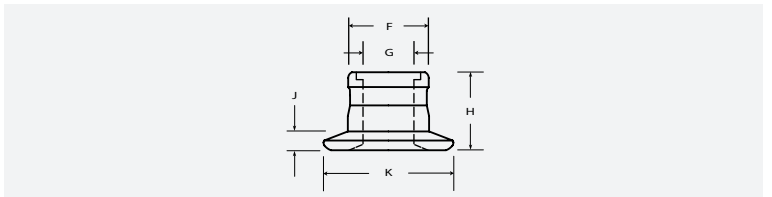
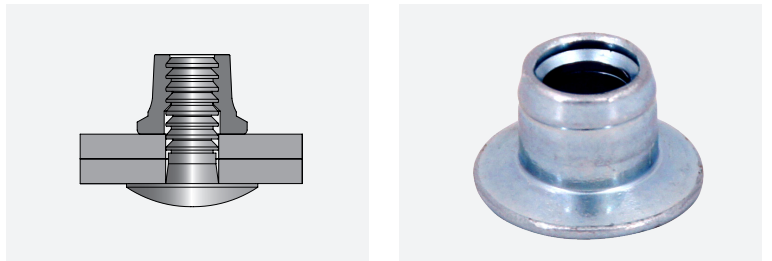
LOCKBOLTS - COLLAR FOR G-GRIP™
STANDARD



Body: **AISI 304 STAINLESS STEEL**
Finish: **ZINC PLATED**

DIAMETER	DESCRIPTION ITEM-CODE	BODY LENGTH H in / mm	J REF in / mm	K in / mm	F in / mm	G in / mm
6						
3/16"	GGCS-I6Z	.270 -.291	.055	.375 -.407	.305 -.315	.190 -.204
4.8 mm		6.858 - 7.391	1.400	9.525 - 10.330	7.747 - 8.001	4.820 - 5.182
8						
1/4"	GGCS-I8Z	.421 -.437	.071	.505 -.528	.395 -.405	.238 -.260
6.4 mm		10.690 - 11.100	1.800	12.820 - 13.410	10,033 - 120.287	6,050 - 6.604

LOCKBOLTS - COLLAR FOR G-GRIP™
MEDIUM



Body: **AISI 304 STAINLESS STEEL**
Finish: **ZINC PLATED**

DIAMETER	DESCRIPTION ITEM-CODE	BODY LENGTH H in / mm	J REF in / mm	K in / mm	F in / mm	G in / mm
6						
3/16"	GGCM-I6Z	.295 -.315	.068	.495 -.535	.305 -.315	.188 -.204
4.8 mm		7.493 - 8.001	1.750	12.573 - 13.589	7.747 - 8.001	4.995 - 5.182
8						
1/4"	GGCM-I8Z	.488 -.514	.100	.665 -.715	.395 -.405	.238 -.260
6.4 mm		12.395 - 13.055	2.540	16.891 - 18.161	10.033 - 10.287	6.050 - 6.604