

NEW



Austin Engineered EXTRUDED HEAVY DUTY BAR LOCKS

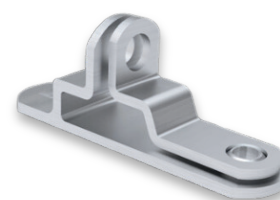
Austin Guaranteed Engineered Solutions™ is proud to introduce a new innovative design: **Austin Engineered 3252 Series Extruded Heavy-Duty Bar Locks** in NEW 12" Length.

Features:

- » Aluminum extruded heavy-duty design
- » Aluminum material eliminates corrosion issues to help reduce warranty claims
- » Tested to be stronger than most steel bar locks on the market
- » Stainless steel pins with self-lubricating bushings and no need to grease
- » 12" Length for lower cost and to match our hinges. Ideal for smaller compression latch applications.
- » HASPs are sold separately or as a KIT with bar locks

PART # BL-3252-12-01-AL

HASP ONLY # BL-3252-AL-HASP-EXT



HASP FOR
BL-3252 AL
BARLOCKS



Don't forget to add ECK complete corrosion protection for aluminum frame applications with dissimilar metals.



LEARN
MORE

